

# Lokal C1

Parter i poddasze

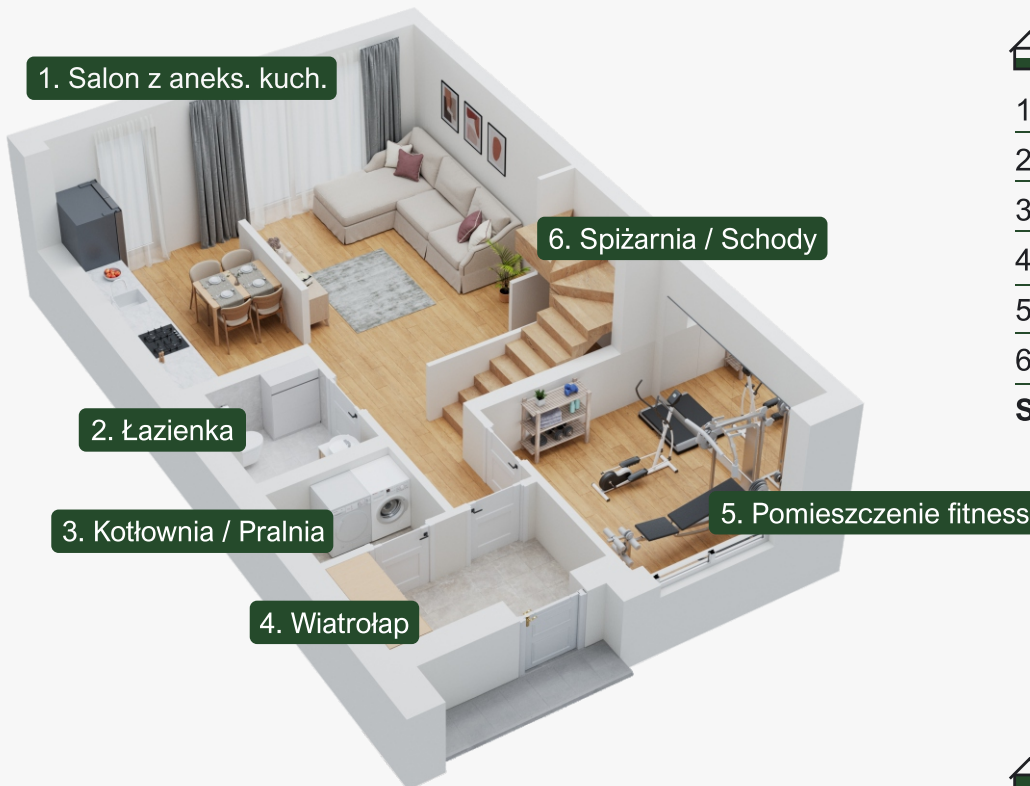
112,50 m<sup>2</sup>

MIMARIPOSA SP. Z O.O.  
ul. Tomusza Zana 11A/166  
20-601 Lublin

+48 81 440 53 88

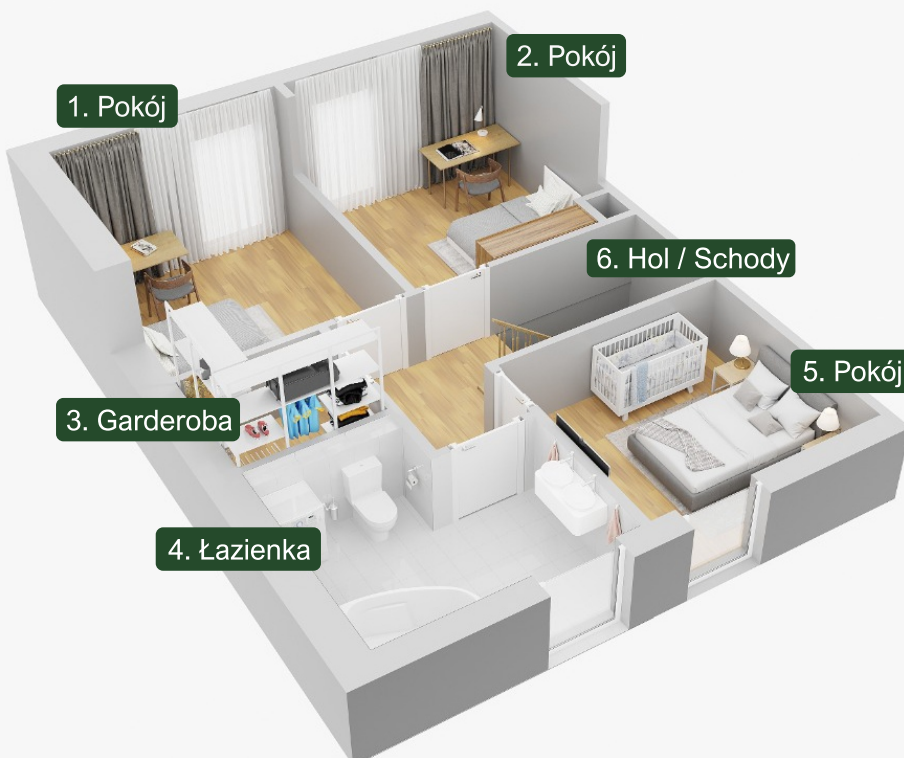
biuro@mimariposa.pl

www.mimariposa.pl



## Parter

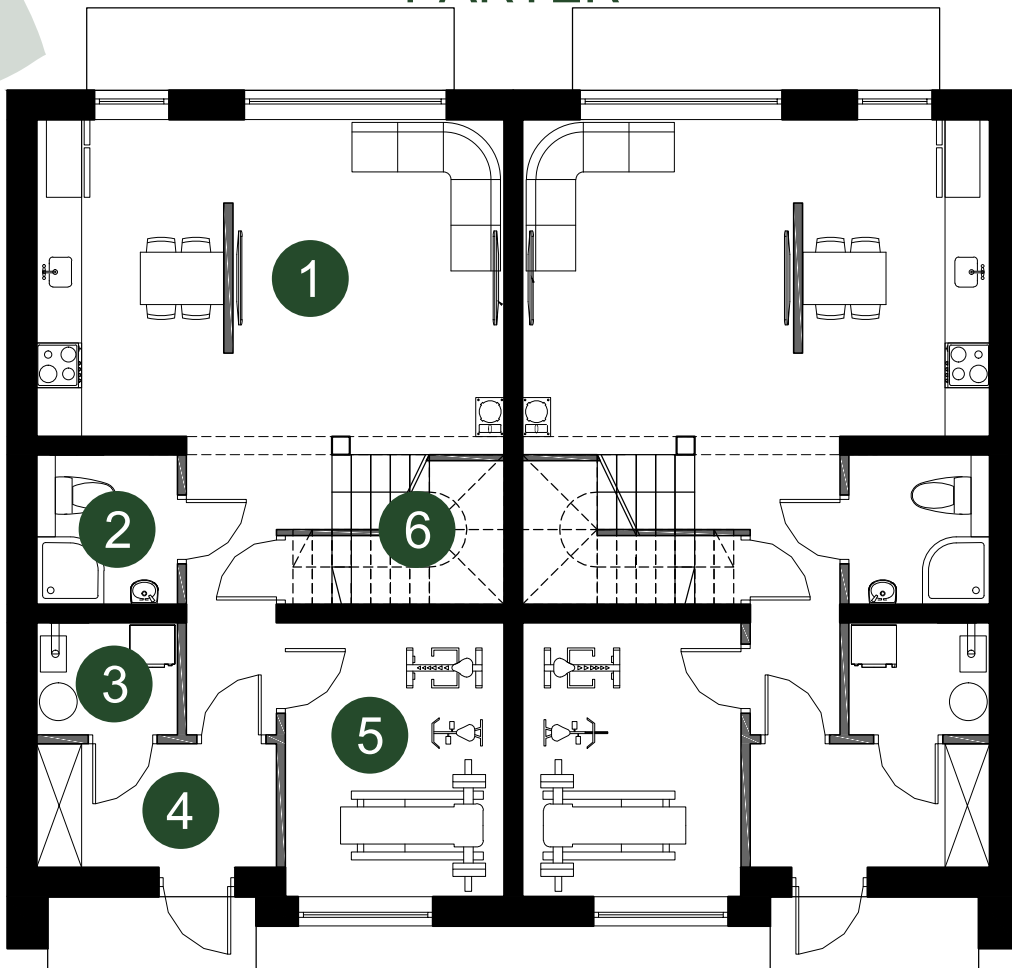
|                          |                            |
|--------------------------|----------------------------|
| 1. Salon z aneks. kuch.  | 32,51 m <sup>2</sup>       |
| 2. Łazienka              | 3,68 m <sup>2</sup>        |
| 3. Kotłownia / Pralnia   | 2,75 m <sup>2</sup>        |
| 4. Wiatrołap             | 5,18 m <sup>2</sup>        |
| 5. Pomieszczenie fitness | 10,56 m <sup>2</sup>       |
| 6. Spiżarnia / Schody    | 2,45 m <sup>2</sup>        |
| <b>Suma powierzchni:</b> | <b>57,13 m<sup>2</sup></b> |



## Poddasze

|                          |                            |
|--------------------------|----------------------------|
| 1. Pokój                 | 11,60 m <sup>2</sup>       |
| 2. Pokój                 | 11,94 m <sup>2</sup>       |
| 3. Garderoba             | 3,57 m <sup>2</sup>        |
| 4. Łazienka              | 8,48 m <sup>2</sup>        |
| 5. Pokój                 | 10,27 m <sup>2</sup>       |
| 6. Hol / Schody          | 9,97 m <sup>2</sup>        |
| <b>Suma powierzchni:</b> | <b>55,83 m<sup>2</sup></b> |

# PARTER



# PODDASZE

